

# Alpair 10M

## Gen. 3 Extended Full-Range emitter

### Grey cone model



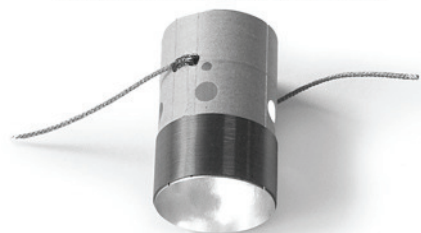
This Alpair 10 Gen.3 is the latest model in a development line designed to extend the performance of mid-sized Markaudio full-range emitters. This generation of Alpair 10 utilises a new ultra thin wall coil. Together with a further modifications to the cone, this latest model delivers usable frequency range up to 25-kHz while retaining its “purist” single cone design,

This driver retains the Multi-form cone technology with a new more efficient profile giving improved high range performance. Design modifications to the Gen.3's cone's neck, together with the lighter coil deliver a better off axis response in the 15 degree region. Central stereo imaging and box angle placements benefit from the these improvements.

The Gen.3 version houses an “Arrestor” in the magnet sub-assembly, a device that helps to avoid damage from over-load situations. For those users who like to add low frequency gain, the Gen.3's power-train (cone, coil and suspensions) design retains the “long throw” design feature. While this driver is not deigned for continuous heavy loads, the Gen.3 is capable of handling variable bass load outputs from from most typical and popular forms of music.

The Gen.3 retains the audible smoothness of its predecessors while adding usable bandwidth, improved SPL and additional scope for optimising room placement of the box system.

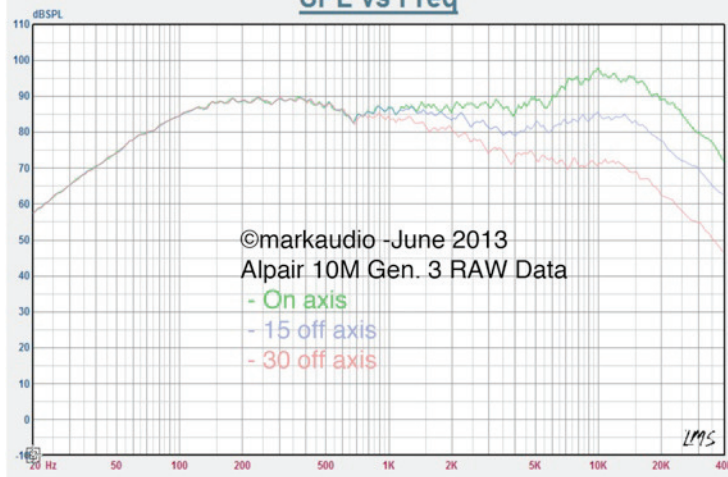
©markaudio-April 2103-Thin bodied coil-Alpair 10 Gen.3





Alpair 10 Gen.3  
 T/S date LMS V4 Anechoic:  
 Revc= 7.200 Ohm  
 Fo= 38.266 Hz  
 Sd= 8.825K mm<sup>2</sup>  
 Vas= 26.320 Ltr  
 Cms= 2.380m M/N  
 Mmd= 6.792 g  
 Mms= 7.269 g  
 BL= 5.772 TM  
 Qms= 1.930  
 Qes= 0.378  
 Qts= 0.316  
 Lev= 71.379u H  
 No= 0.378 %  
 SPLo= 87.988 dB  
 Xmax = 7.5mm (1 way with Arrestor)  
 Power = 30 watts nom.

### SPL vs Freq



### Impedance vs Freq

